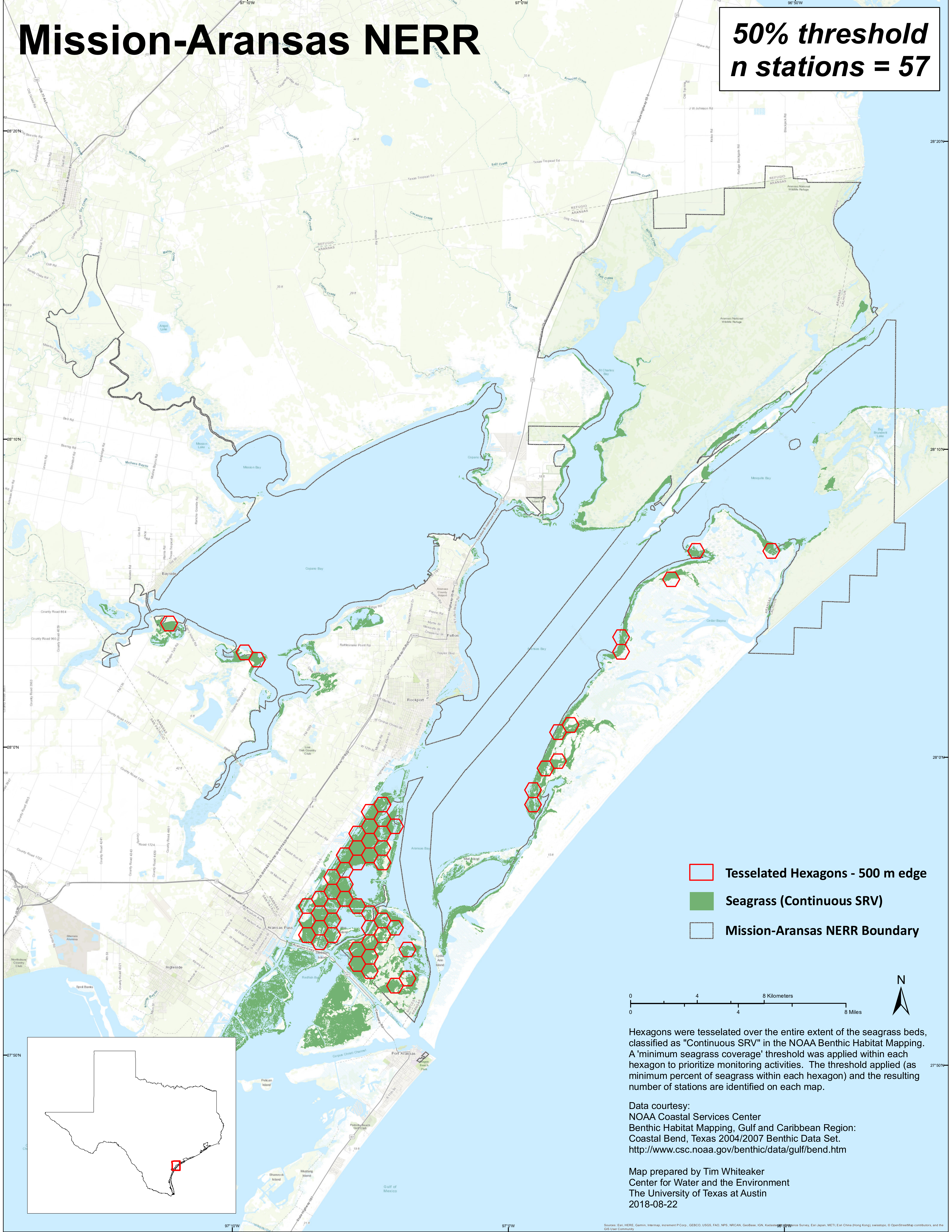
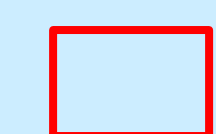

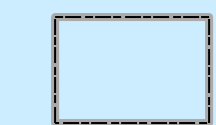
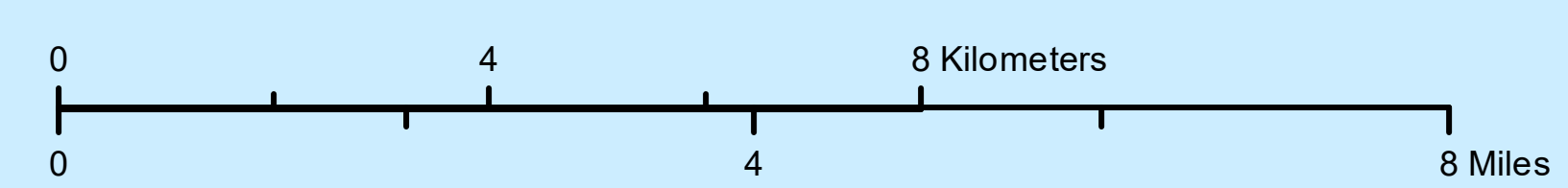


Mission-Aransas NERR

**50% threshold
n stations = 57**



-  Tessellated Hexagons - 500 m edge
-  Seagrass (Continuous SRV)
-  Mission-Aransas NERR Boundary



Hexagons were tessellated over the entire extent of the seagrass beds, classified as "Continuous SRV" in the NOAA Benthic Habitat Mapping. A 'minimum seagrass coverage' threshold was applied within each hexagon to prioritize monitoring activities. The threshold applied (as minimum percent of seagrass within each hexagon) and the resulting number of stations are identified on each map.

Data courtesy:
NOAA Coastal Services Center
Benthic Habitat Mapping, Gulf and Caribbean Region:
Coastal Bend, Texas 2004/2007 Benthic Data Set.
<http://www.csc.noaa.gov/benthic/data/gulf/bend.htm>

Map prepared by Tim Whiteaker
Center for Water and the Environment
The University of Texas at Austin
2018-08-22

